

Startex™



WHITE



CREAM



BISQUE

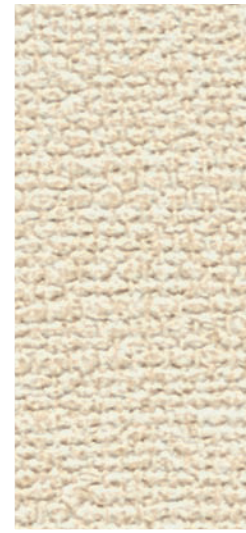


LONDON WHITE

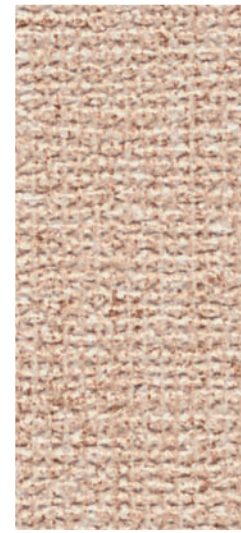
Hightex™



COFFEE CREAM



WHITE RICE



BEACH



STONE

Woodtex®

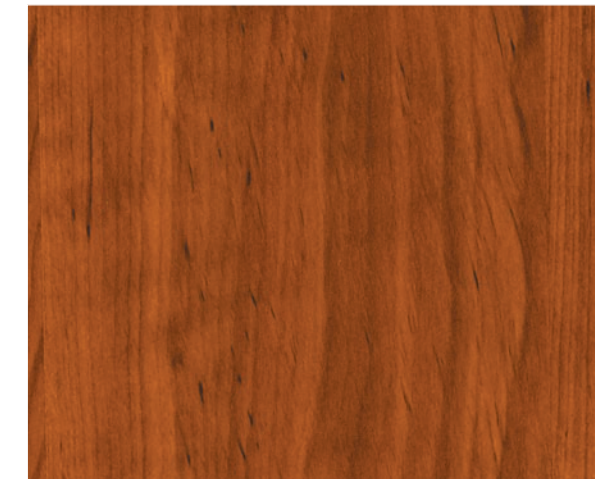


WHEATWOOD™



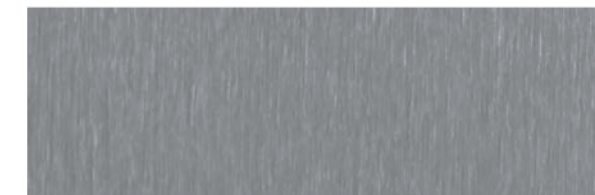
HONEYWOOD™

Woodtex® PREMIUM



SORRELWOOD™

Lustertex™



BRUSHED ALUMINUM

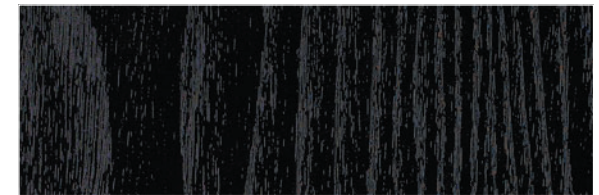
from Panelfold®



CANYONWOOD™



SABLEWOOD™



EBONY ASH



GLACIERWOOD™



SILKWOOD™



BRUSHED PEWTER

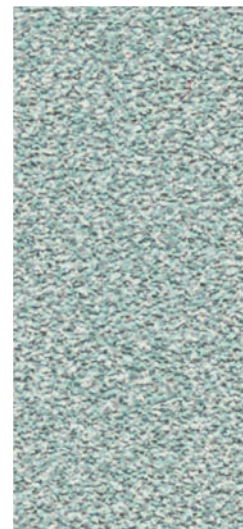
Sandtex™



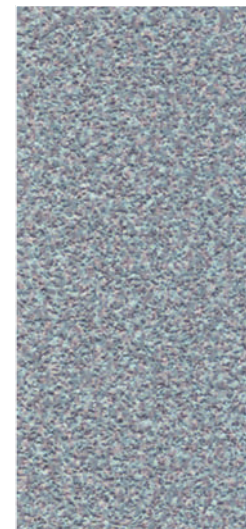
OYSTER



GREIGE



MINT



EARLY SKY

Ropetex®



SNOWDRIFT



FROSTY

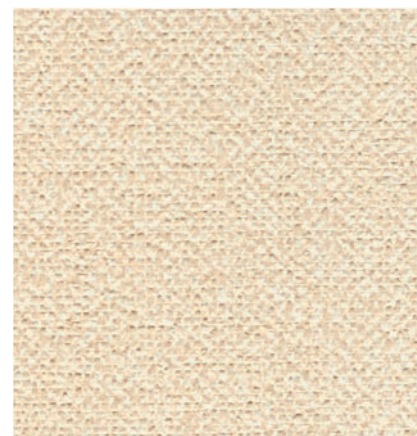


FRENCH BEIGE

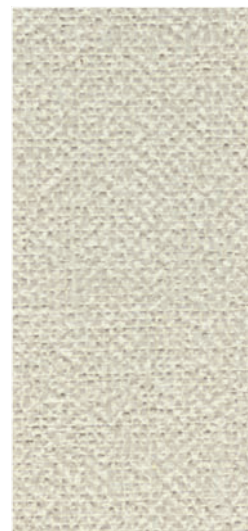


PUMICE

FabRICTEX®



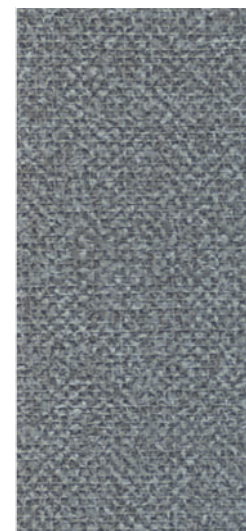
DOVER



PEARL

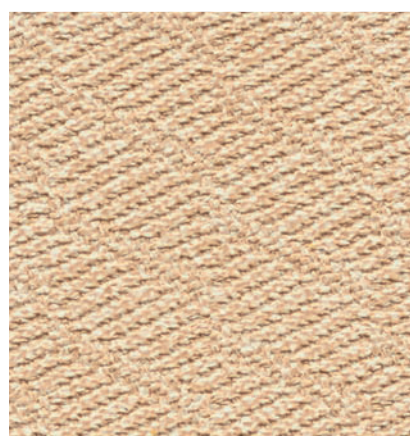


NUTMEG

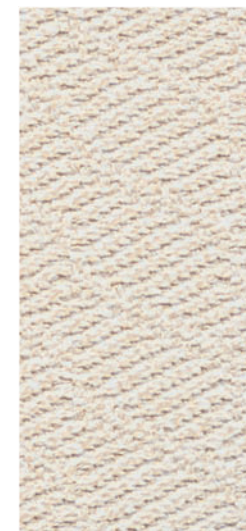


GREY FLANNEL

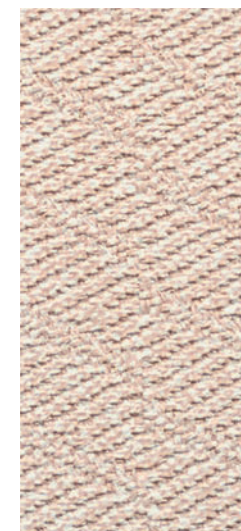
Meritex™



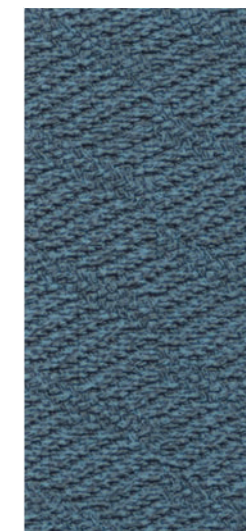
CREAM OF WHEAT



SANDSTONE



ALMOND



INDIGO

SCOPE

Panelfold's **Vinyltex™** vinyl color selections are an attractive, durable and economical design solution available on Panelfold product models as indicated below:

	Scale	Sonicwal	Fabricwal	Moduflex	PrimeSpacer
Startex FILM					
	TYPE I				
	TYPE II				
Sandtex	TYPE I				
	TYPE II				
Fabrictex	TYPE I				
	TYPE II				
Hightex	TYPE I				
	TYPE II				
Ropetex	TYPE I				
	TYPE II				
Meritex	TYPE I				
	TYPE II				
Woodtex FILM			N/A	Series 400/600 Only	
Lustertex FILM			N/A	Series 400/600 Only	

Standard Upgrade

FIRE RESISTANCE

All Panelfold vinyl surfaces have been tested for Class A fire hazard classification in accordance with ASTM E-84 Tunnel Test Method (Surface Burning Characteristics of Building Materials).

	FILM	TYPE I	TYPE II
Flame Spread	10	10	5 or 10
Smoke Density	0 or 15	25	5

NOTE: The numerical flame spread rating and other test results referenced herein are not intended to reflect hazards presented by this or any other materials under actual fire conditions.

PERFORMANCE

Panelfold vinyls have low static properties, are non-allergenic, and will not mildew, rot or support the growth of bacteria.

MAINTENANCE

Panelfold vinyls are easy to clean. Use traditional cleaning methods: i.e. washing, wiping, brushing, vacuuming. For water based stains use water based cleaning agents. For oil based stains use solvent cleaner.

Vinyltex™

STANDARD VINYL COLOR SELECTIONS

from
Panelfold®

Panelfold®

**OPERABLE PARTITIONS • ACCORDION PARTITIONS
PORTABLE PANEL PARTITIONS • ACOUSTICAL PANELS • FOLDING DOORS**

**FIRST CHOICE ACCORDION DOORS • Phone: 877-723-0209 • FAX: 503-723-0503
E-Mail: Sales@Accordion-Door.com • Internet: www.accordion-door.com**

Please contact First Choice Accordion Door for additional textured vinyls, wood veneers, high pressure plastic laminates, vertical rib wall carpeting and woven fabrics available for use on these and other Panelfold Space Division Products